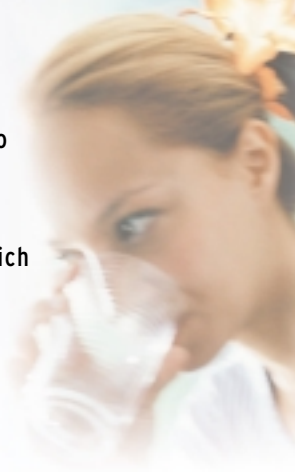


It's a fact: We should all drink plenty of fresh water each day to keep our body cells in prime condition. Properly hydrated we feel more alive, have more energy and concentrate better - which helps increase our productivity. Drinking the recommended daily water intake of 8 glasses has been shown to reduce the incidence of respiratory, stress related and dietary problems - which can lead to fewer lost working days.



“Point of use water coolers and dispensers are an environmentally friendly, convenient and cost effective way of providing a constant supply of fresh filtered water.”

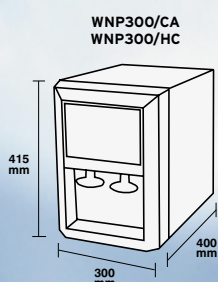
Offering total cost control, point of use models are connected directly into the mains water supply, the water being passed through an advanced in-line filtration system that removes organic chemicals, tastes and odours, leaving only crystal clear, fresh tasting water - and there's no time wasted handling heavy bottles, no valuable storage space lost and no chance of running out of water - especially on hot days.



WNP300/HC - dispenses hot and chilled water



WNP300/CA - dispenses chilled and ambient water



ACIS A300 Home & Office Series

Attractive, ultra compact models specially designed for use in smaller offices.

Features

- In line filter system, fitted inside machine
- Auto temperature controller (cold 4°C - 10°C, hot 70°C - 85°C)
- Remote filtered water outlet
- On/Off and status neon indicator lights
- Removable drip tray
- Plugs into 13amp socket



Model No.	WNP300/CA	WNP300/HC
Type	Point-of-Use Cooler Table-top Cold + Ambient	Point-of-Use Dispenser Table top Hot + Cold
Tank Capacity	3 litres Cold -	3 litres Cold 1 litre Hot
Continuous Extraction	1 litre Cold at 4°C -	1 litre Cold at 4°C 0.5 litre Hot at 85°C
Refrigerant	Thermo-electric	
Power requirement	13amp 220/240V	
Power Consumption	55w Cold -	55w Cold 300w Hot
Weight	10kg	
Dimensions	300(w) x 415(h) x 400(d)mm	